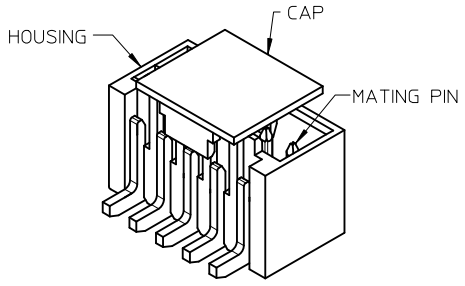


- NOTES:
- MATERIAL:
HOUSING: GLASS FILLED LIQUID CRYSTAL POLYMER,
UL94 V-0,
COLOR - SEE TABLE.
CAP: NYLON, GLASS FILLED, UL94V-0
COLOR: BEIGE.
PINS: BRASS ALLOY, C26000.
 - PLATING: 2.54µM. MIN. MATTE TIN OVER 1.27µM MIN. NICKEL EXCEPT AT CUT-EDGE WHERE THICKNESS CAN BE 1.90µM MIN.
 - CUT EDGE TIN MEASUREMENT POINTS.
 - DRAWING SHOWS PLUG WITH 5 CIRCUITS.
 - HEADER TO BE USED WITH CRIMP HOUSING, P/N 87439 AND CRIMP TERMINAL, P/N 87421.

REVISED EC NO: J2011-1168 DRWN: CWLAM CHKD: APPR: NUKITA	DESCRIPTION 2011/03/08 2011/05/09	QUALITY SYMBOLS	GENERAL TOLERANCES (UNLESS SPECIFIED)		DIMENSION STYLE	SCALE	DESIGN UNITS	THIRD ANGLE PROJECTION			
		▽=0 ∇=0	mm	INCH	MM ONLY	NTS	METRIC	TITLE			
			4 PLACES ± --- ± ---	3 PLACES ± --- ± ---	2 PLACES ± 0.20 ± ---	1 PLACE ± --- ± ---	DRAWN BY	DATE	1.50MM PITCH, W-T-B HEADER, VERTICAL, SMT		
			ANGULAR ± 3 °		DRAFT WHERE APPLICABLE MUST REMAIN WITHIN DIMENSIONS	CHECKED BY	DATE	MOLEX INCORPORATED			
D	REV		SIZE	THIS DRAWING CONTAINS INFORMATION THAT IS PROPRIETARY TO MOLEX INCORPORATED AND SHOULD NOT BE USED WITHOUT WRITTEN PERMISSION			DOCUMENT NO.	SHEET NO.			
			A3	SEE TABLE			SD-78047-001	1 OF 4			

10 9 8 7 6 5 4 3 2 1

HOUSING COLOR	LEAD FREE TERMINAL P/N	CAP	HEADER IN TUBE PACKING	HEADER IN TAPE & REEL	HEADER IN TAPE & REEL (WITH HOLE)	CIRCUIT SIZE	A	B	C	D	E
BIEGE	TIN PLATING	N/A	78047-0242	78047-0243	---	2	1.50	3.30	3.70	4.30	1.70
			78047-0342	78047-0343	---	3	3.00	4.80	5.20	5.80	3.20
			78047-0442	78047-0443	---	4	4.50	6.30	6.70	7.30	4.70
			78047-0542	78047-0543	---	5	6.00	7.80	8.20	8.80	6.20
			78047-0642	78047-0643	---	6	7.50	9.30	9.70	10.30	7.70
			78047-0742	78047-0743	---	7	9.00	10.80	11.20	11.80	9.20
			78047-0842	78047-0843	---	8	10.50	12.30	12.70	13.30	10.70
			78047-0942	78047-0943	---	9	12.00	13.80	14.20	14.80	12.20
			78047-1042	78047-1043	---	10	13.50	15.30	15.70	16.30	13.70
			78047-1142	78047-1143	---	11	15.00	16.80	17.20	17.80	15.20
			78047-1242	78047-1243	---	12	16.50	18.30	18.70	19.30	16.70
			78047-1342	78047-1343	---	13	18.00	19.80	20.20	20.80	18.20
			78047-1442	78047-1443	---	14	19.50	21.30	21.70	22.30	19.70
			78047-1542	78047-1543	---	15	21.00	22.80	23.20	23.80	21.20
					YES	---	---	78047-0574	5	6.00	7.80
		YES	---	---	78047-0774	7	9.00	10.80	11.20	11.80	9.20



PART NUMBER ASSIGNMENT

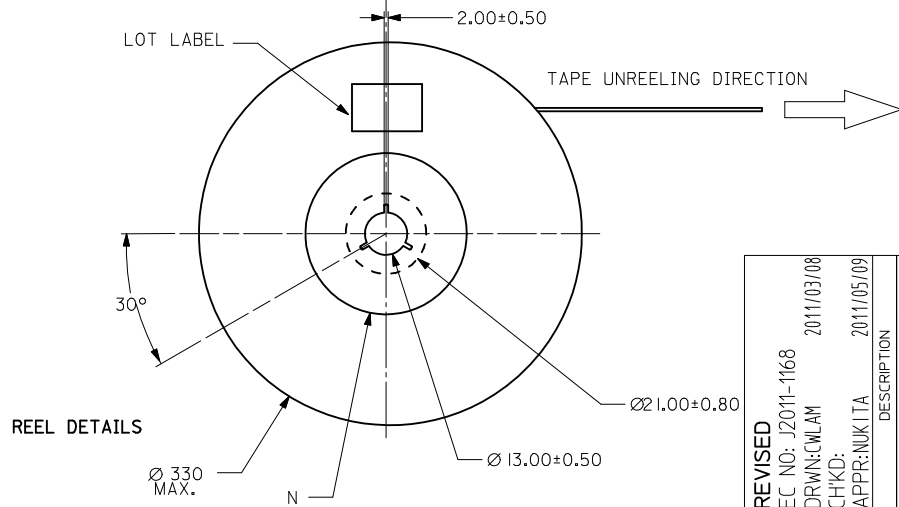
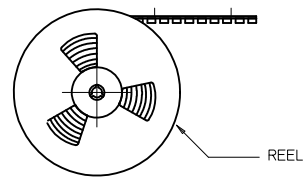
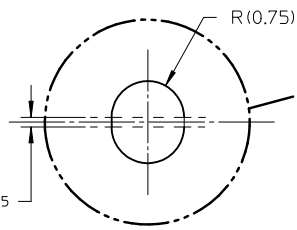
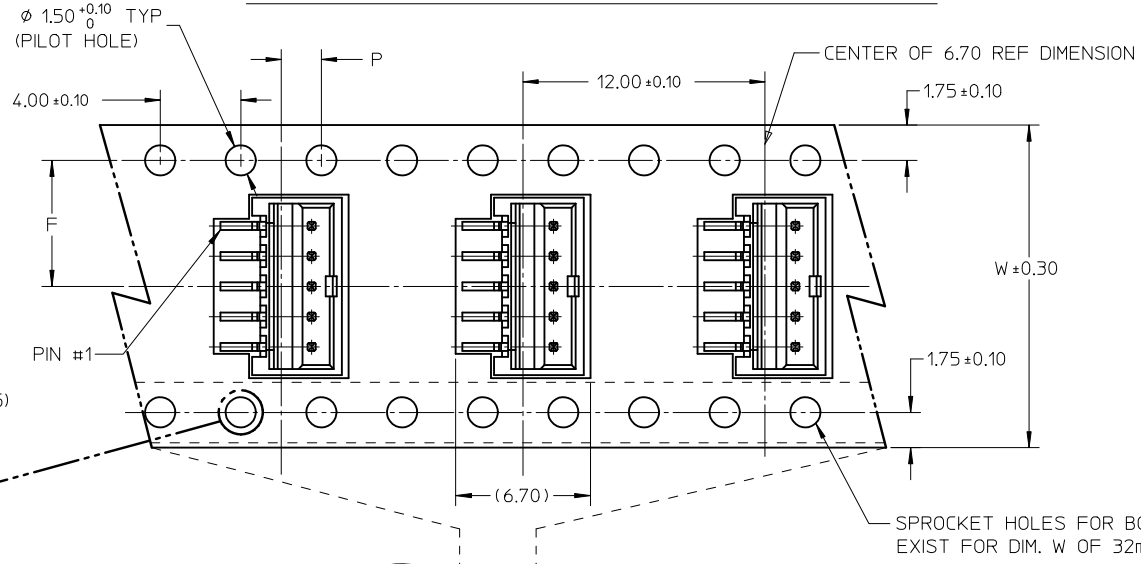
- 78047-XXXX
- 2- TUBE PACKAGING
 - 3- TAPE AND REEL PACKAGING
 - 4- TAPE AND REEL PACKAGING WITH SPOCKET HOLE
 - 4- BEIGE COLOR HSG } WITHOUT CAP
 - 5- BLACK COLOR HSG } WITHOUT CAP
 - 6- BLACK COLOR HSG } WITH CAP
 - 7- BEIGE COLOR HSG } WITH CAP
 - 02 TO 15 CIRCUIT SIZE

(PLEASE CONTACT MOLEX FOR OTHER PART NUMBER REQUEST)

REVISED EC NO: J2011-1168 DRW: CMLAM CHKD: APPR: NUKITA	DESCRIPTION 2011/03/08 2011/05/09	QUALITY SYMBOLS	GENERAL TOLERANCES (UNLESS SPECIFIED)		DIMENSION STYLE MM ONLY		SCALE NTS	DESIGN UNITS METRIC	THIRD ANGLE PROJECTION	
		▽=0 ▽=0	mm	INCH	DRAWN BY SKANG	DATE 2007/07/18	TITLE 1.50MM PITCH, W-T-B HEADER, VERTICAL, SMT			
		4 PLACES ± --- ± ---	3 PLACES ± --- ± ---	CHECKED BY ATSEE	DATE 2007/07/25					
				2 PLACES ± 0.20 ± ---	1 PLACE ± --- ± ---	APPROVED BY NUKITA	DATE 2010/10/14	MOLEX INCORPORATED		
		ANGULAR ± 3 °		MATERIAL NO.	DOCUMENT NO.	SHEET NO.				
		DRAFT WHERE APPLICABLE MUST REMAIN WITHIN DIMENSIONS		SEE TABLE		SD-78047-001		2 OF 4		

9 8 7 6 5 4 3 2 1

EMBOSSED CARRIER TAPE PACKING DETAILS FOR PARTS WITHOUT CAP



REVISED	EC NO: J2011-1168	2011/03/08
DRWN: CWLAM	CHKD:	2011/05/09
APPR: NUKITA	DESCRIPTION	
D	REV	

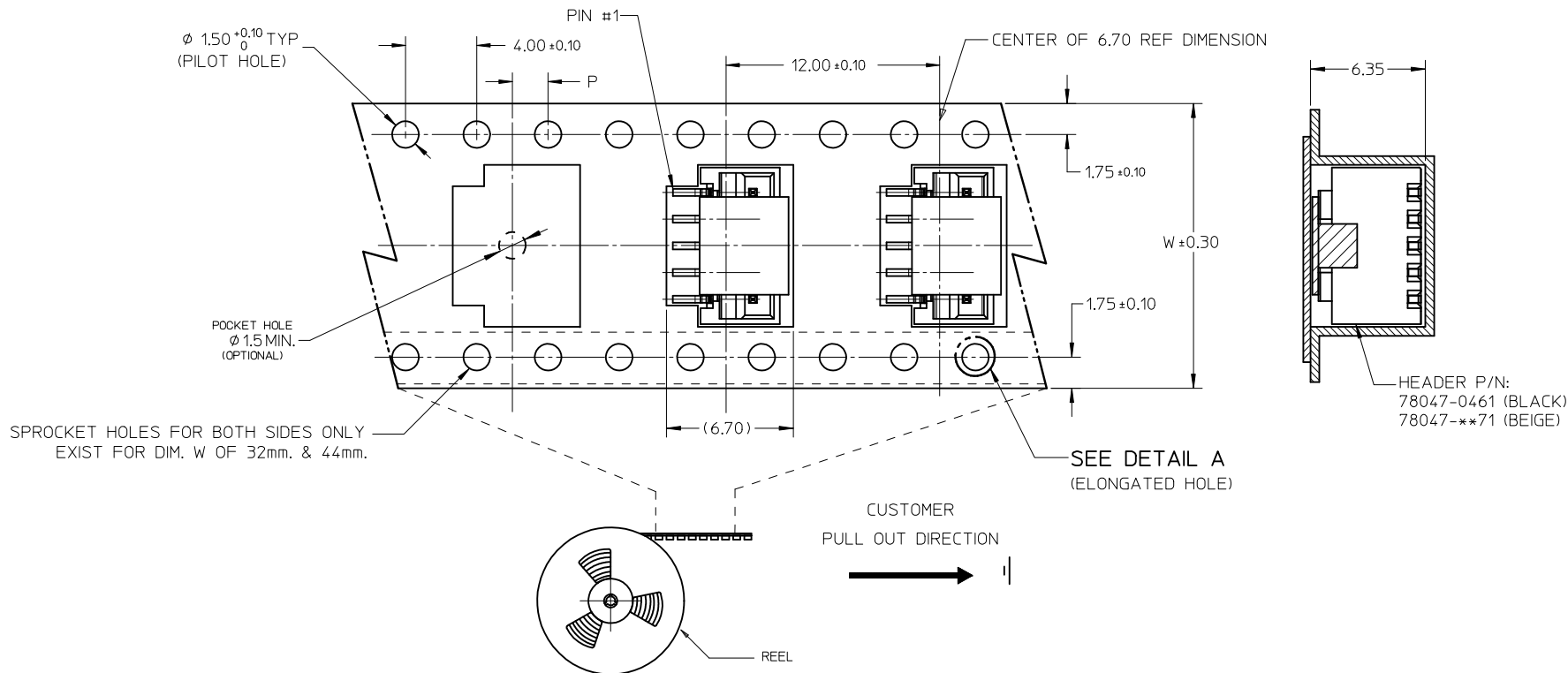
QUALITY SYMBOLS	$\nabla = 0$ $\square = 0$
-----------------	-------------------------------

GENERAL TOLERANCES (UNLESS SPECIFIED)	mm	INCH
4 PLACES	± ---	± ---
3 PLACES	± ---	± ---
2 PLACES	± 0.20	± ---
1 PLACE	± ---	± ---
ANGULAR ± 3 °		
DRAFT WHERE APPLICABLE MUST REMAIN WITHIN DIMENSIONS		

DIMENSION STYLE		SCALE	DESIGN UNITS	THIRD ANGLE PROJECTION
MM ONLY		NTS	METRIC	
DRAWN BY	DATE	TITLE		
SKANG	2007/07/18	1.50MM PITCH, W-T-B HEADER, VERTICAL, SMT		
CHECKED BY	DATE			
ATSEE	2007/07/25			
APPROVED BY	DATE			
NUKITA	2010/10/14			
MATERIAL NO.	SEE TABLE			

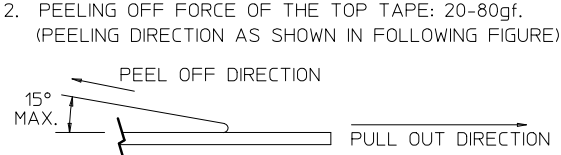
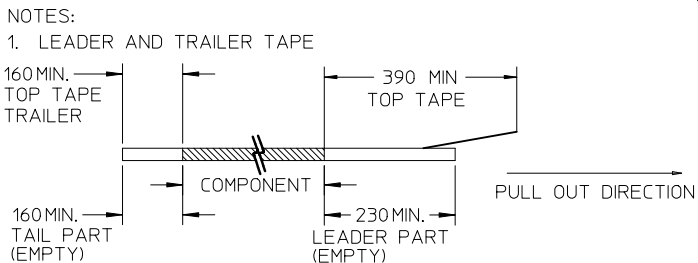
MOLEX INCORPORATED		DOCUMENT NO.	SHEET NO.
SD-78047-001			3 OF 4
THIS DRAWING CONTAINS INFORMATION THAT IS PROPRIETARY TO MOLEX INCORPORATED AND SHOULD NOT BE USED WITHOUT WRITTEN PERMISSION			

EMBOSSED CARRIER TAPE PACKING DETAILS FOR PARTS WITH CAP (A)



SPROCKET HOLES FOR BOTH SIDES ONLY EXIST FOR DIM. W OF 32mm. & 44mm.

HEADER P/N:
78047-0461 (BLACK)
78047-**71 (BEIGE)



- THE TAPE IS TREATED FOR ANTI-STATIC.
- PACKAGING STANDARD IS AS PER EIA-481.
- TAPE & REEL QUANTITY = 1000PCS/REEL (WITHOUT CAP)
TAPE & REEL QUANTITY = 900PCS/REEL (WITH CAP)

15	44	20.20±0.15	100	44.40	50.40	2.00±0.15
11, 12, 13, 14	32	14.20±0.10	100	32.40	38.40	2.00±0.10
7, 8, 9, 10	24	11.50±0.10	100	24.40	30.40	2.00±0.10
2, 3, 4, 5, 6	16	7.50±0.10	100	16.40	22.40	2.00±0.10
CIRCUIT SIZE	W	F	N	G	T MAX	P

REVISED EC NO: J2011-1168 DRWN: CWLAM CHKD: APPR: NUKITA 2011/03/08 2011/05/09	QUALITY SYMBOLS ▽=0 ◻=0	GENERAL TOLERANCES (UNLESS SPECIFIED)		DIMENSION STYLE MM ONLY		SCALE NTS	DESIGN UNITS METRIC	THIRD ANGLE PROJECTION			
		4 PLACES ± --- ± --- 3 PLACES ± --- ± --- 2 PLACES ± 0.20 ± --- 1 PLACE ± --- ± ---	mm INCH	DRAWN BY SKANG	DATE 2007/07/18	TITLE 1.50MM PITCH, W-T-B HEADER, VERTICAL, SMT					
		ANGULAR ± 3 °		CHECKED BY ATSEE	DATE 2007/07/25	MOLEX INCORPORATED					
		DRAFT WHERE APPLICABLE MUST REMAIN WITHIN DIMENSIONS		APPROVED BY NUKITA	DATE 2010/10/14	MATERIAL NO. SEE TABLE		DOCUMENT NO. SD-78047-001	SHEET NO. 4 OF 4		