

## Sensor/Actuator cable - SAC-3P- 3,0-PUR/A-1L-S 110V - 1698220

Please be informed that the data shown in this PDF Document is generated from our Online Catalog. Please find the complete data in the user's documentation. Our General Terms of Use for Downloads are valid (<http://phoenixcontact.com/download>)

Sensor/Actuator cable, 3-position, PUR/PVC, free cable end, on Valve connector A, with 1 LED, connected with Z diode, Cable length: 3 m



### Key commercial data

|                                      |           |
|--------------------------------------|-----------|
| Packing unit                         | 1 pc      |
| Minimum order quantity               | 50 pc     |
| Weight per Piece (excluding packing) | 197.9 GRM |
| Custom tariff number                 | 85444290  |
| Country of origin                    | Germany   |

### Technical data

#### Dimensions

|  |       |
|--|-------|
| Length of cable                            | 3 m   |
| Stripping length of the free conductor end | 50 mm |

#### Ambient conditions

|                      |      |
|----------------------|------|
| Degree of protection | IP67 |
|----------------------|------|

#### General

|                              |          |
|------------------------------|----------|
| Rated current at 40°C        | 4 A      |
| Rated voltage                | 110 V    |
| Number of positions          | 3        |
| Contact resistance           | ≤ 15 mΩ  |
| Insulation resistance        | ≥ 100 MΩ |
| Status display               | 1 LED    |
| Protective circuit/component | Z diode  |
| Surge voltage category       | II       |
| Pollution degree             | 3        |

#### Material

|   |      |
|---|------|
| Inflammability class according to UL 94 | HB   |
| Valve plug contact material             | CuSn |
| Valve plug contact surface material     | Ag   |

## Sensor/Actuator cable - SAC-3P- 3,0-PUR/A-1L-S 110V - 1698220

### Technical data

#### Material

|                                    |                              |
|------------------------------------|------------------------------|
| Valve plug contact insert material | PBT                          |
| Material housing valve plug        | PBT                          |
| Sealing material                   | TPU (Flat gasket valve plug) |

#### Cable

|   |                                      |
|---|--------------------------------------|
| Cable type                                    | PUR/PVC black                        |
| Cable abbreviation                            | LiYY11Y-JZ                           |
| Conductor cross section                       | 0.75 mm <sup>2</sup>                 |
| AWG signal line                               | 18                                   |
| Conductor structure signal line               | 24x 0.20 mm                          |
| Core diameter including insulation            | approx. 1.8 mm                       |
| Thickness, insulation                         | approx. 0.34 mm (Core insulation)    |
|   | approx. 0.35 mm (Outer cable sheath) |
|   | approx. 0.3 mm (Inner sheath)        |
| Wire colors                                   | black 1, black 2, green/yellow       |
| Overall twist                                 | 3 concentrically twisted wires       |
| Length of twist, overall twist                | 83 mm                                |
| External cable diameter                       | 5.20 mm                              |
| Smallest bending radius, movable installation | 62 mm                                |
| Outer sheath, material                        | PUR                                  |
| Material, inner sheath                        | PVC                                  |
| Material conductor insulation                 | PVC                                  |
| Conductor material                            | Bare Cu litz wires                   |
| Insulation resistance                         | ≥ 1 MΩ*km                            |
| Nominal voltage, cable                        | 240 V                                |
| Test voltage, cable                           | 2000 V                               |

### Classifications

#### eCl@ss

|            |          |
|------------|----------|
| eCl@ss 4.0 | 27060306 |
| eCl@ss 4.1 | 27060306 |
| eCl@ss 5.0 | 27061801 |
| eCl@ss 5.1 | 27061801 |
| eCl@ss 6.0 | 27061801 |
| eCl@ss 7.0 | 27061801 |
| eCl@ss 8.0 | 27061801 |

# Sensor/Actuator cable - SAC-3P- 3,0-PUR/A-1L-S 110V - 1698220

## Classifications

### ETIM

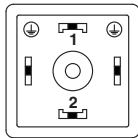
|          |          |
|----------|----------|
| ETIM 2.0 | EC000830 |
| ETIM 3.0 | EC001855 |
| ETIM 4.0 | EC001855 |
| ETIM 5.0 | EC001855 |

### UNSPSC

|               |          |
|---------------|----------|
| UNSPSC 6.01   | 31251501 |
| UNSPSC 7.0901 | 31251501 |
| UNSPSC 11     | 31251501 |
| UNSPSC 12.01  | 31251501 |
| UNSPSC 13.2   | 31251501 |

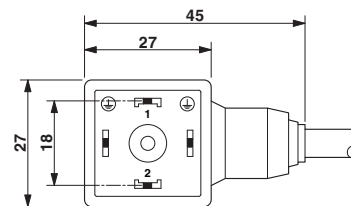
## Drawings

Schematic diagram



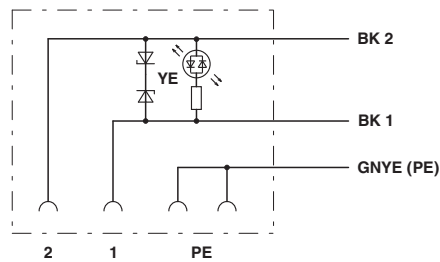
Valve connector pin assignment, type A

Dimensioned drawing



Valve connector, type A

Circuit diagram



Contact assignment of the valve plug