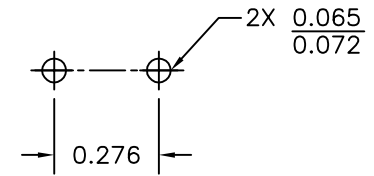
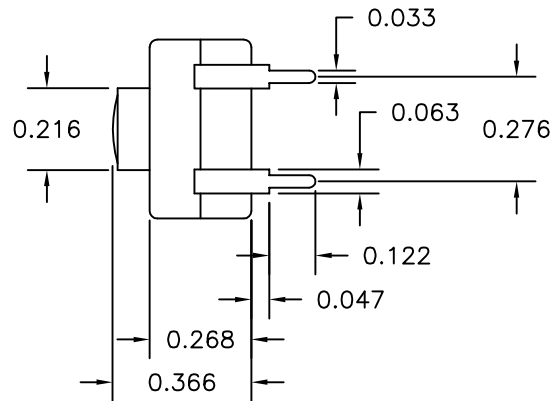
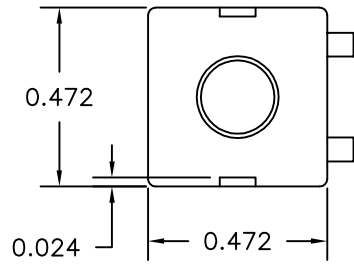
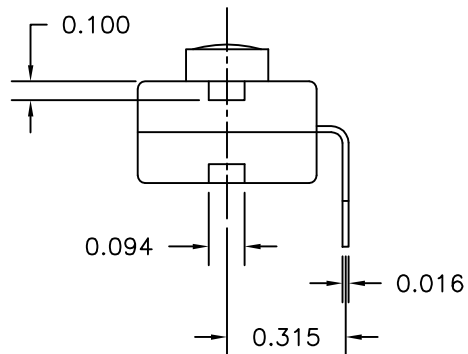


LTR	EN	DESCRIPTION	APPR	BY	DATE
A	-	INITIAL RELEASE	RB	DC	07-21-03
A1	-	CHG'D ELECTRICAL RATING FROM 300mA TO 500mA	MT	NH	06-14-12
A2	-	REMOVED UL ON THE ELECTRICAL DESCRIPTION	MT	DC	08-27-12



RECOMMENDED  
MOUNTING PATTERN




JUDCO INVENTORY NO. 50-0015-00  
SWITCH TYPE: PUSH BUTTON, SPST, ON-OFF  
ELECTRICAL RATING: 12 VDC, 500mA

CUSTOMER:

APPROVED BY: \_\_\_\_\_

DATE: \_\_\_\_\_

DIMENSIONS IN INCHES DIMENSIONS ARE REFERENCE		 HARBOR CITY CALIFORNIA TITLE <b>J-977 MINI FLAT PAK W/BENT TERMINALS</b>	
DRAWN: DC	02-27-03	DWG. NO.	<b>1415-351</b>
APPR: KJ	07-21-03	SHEET	1 OF 1
ENG: IS	06-14-12	1415U351A2.DWG	

This document embodies a product, component, and/or design proprietary to JUDCO MANUFACTURING INC., and which is protected either as a trade secret, by U.S. Patent, or by copyright. It may not be used in any way without written express consent of JUDCO MANUFACTURING INC.