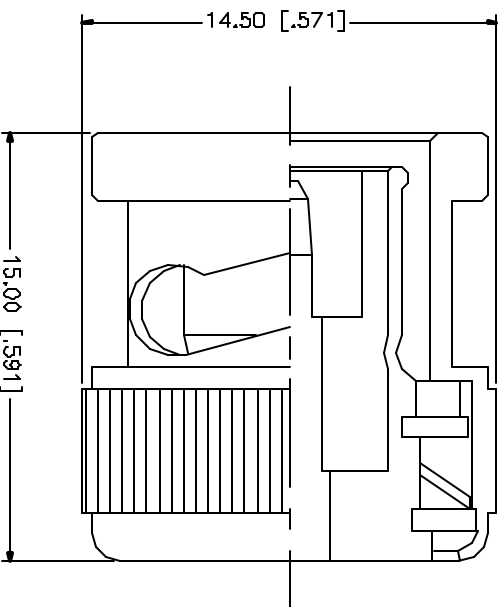


| REV. | DATE | DESCRIPTION |
|------|----------|-----------------------|
| NC | 04/21/97 | INITIAL RELEASE |
| A | 05/18/05 | UPDATE DRAWING FORMAT |



| QTY | FINISH | MATERIAL | DESCRIPTION |
|-----|---------|----------|-------------|
| 1 | COLD | BRASS | CONTACT PIN |
| 1 | NATURAL | TEFLON | INSULATOR |
| 1 | NICKEL | BRASS | BODY |
| | | | DESCRIPTION |

| | |
|--|--|
| UNLESS OTHERWISE SPECIFIED DIMENSIONS ARE IN INCHES AND FOR DIMENSIONS REFER TO THE DRAWING. | |
| UNLESS OTHERWISE SPECIFIED TOLERANCES FOR DIMENSIONS ARE: | |
| 0.5 - 30mm ± 0.20mm | |
| 30 - 120mm ± 0.50mm | |
| UNLESS OTHERWISE SPECIFIED DIMENSIONS FOR TAPER ARE: | |
| .020 - .315 = ± 0.007" | |
| .316 - 1.180 = ± 0.016" | |
| 1.180 - 4.724 = ± 0.020" | |

| | |
|--------------|----------|
| APPROVALS | DATE |
| DRAWN G.R.S. | 05/18/05 |
| CHECKED | |
| ISSUED | |
| SHEET 1 OF 1 | |

| | | | | | | | |
|------------------|------------|----------------|---|------|---|-------|----|
| DWG. NO. | 202114.DWG | REV. | A | SIZE | A | SCALE | NA |
| PART DESCRIPTION | | BNC SHORT PLUG | | | | | |
| PART NO. | | 202114 | | | | | |

Amphenol Connex