

# MICRO SWITCH

A DIVISION OF HONEYWELL REGULATORY COMPANY  
FREEPORT, ILLINOIS

FED. MFR. CODE 91929

# SWITCH - ENCLOSED

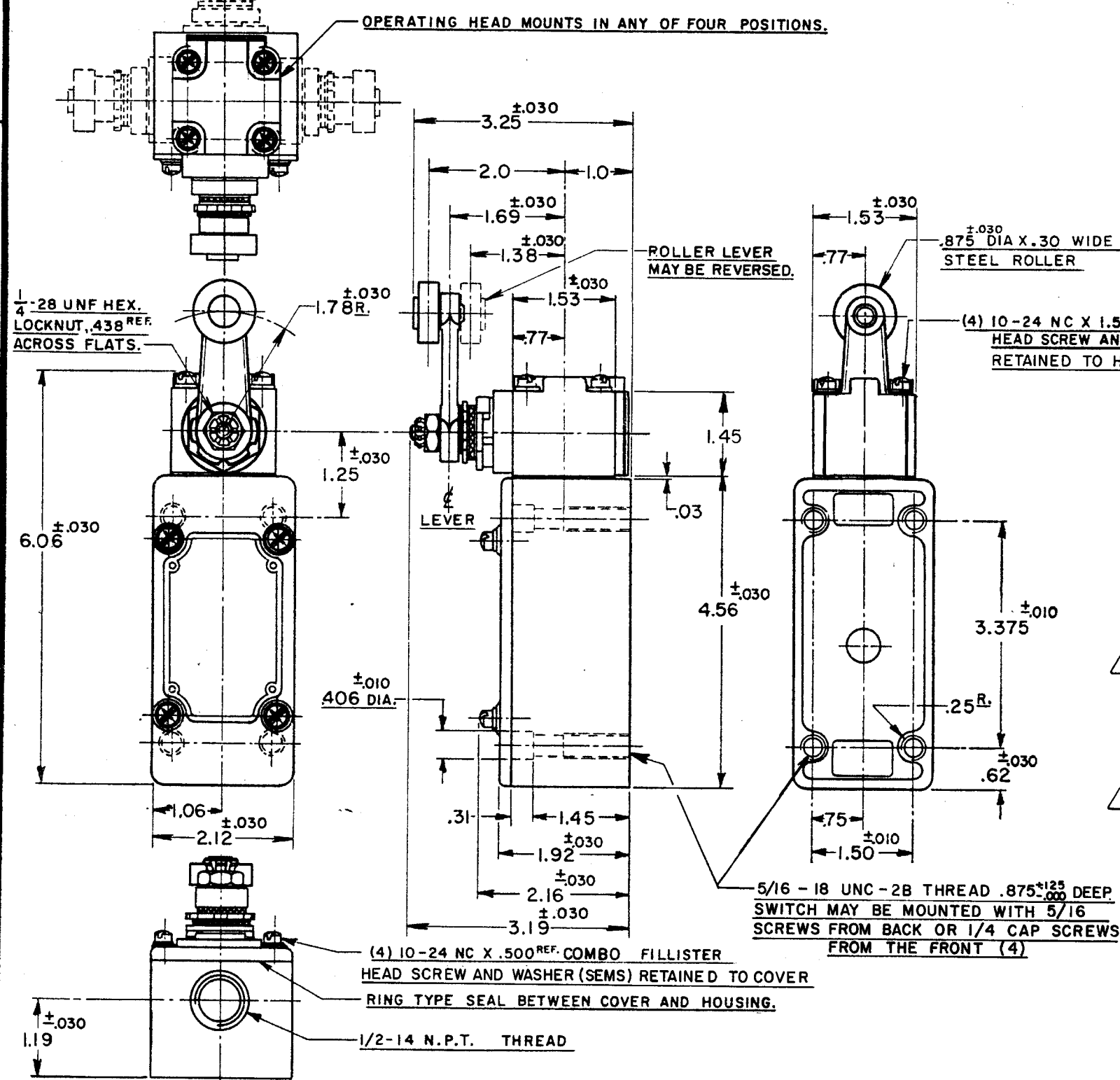
CATALOG LISTING

## 51ML1

THIS DRAWING COVERS A PROPRIETARY ITEM AND IS THE PROPERTY OF MICRO SWITCH, A DIVISION OF HONEYWELL. THIS DRAWING IS NOT TO BE COPIED OR USED WITHOUT THE APPROVAL OF MICRO SWITCH.



51ML1  
 M  
 DRAWING NUMBER  
 3814  
 ISSUE  
 X  
 REVISIONS  
 A CO 8520  
 R. L. Z.  
 12 OCT. 56  
 B CORR.  
 L. C. S.  
 11 OCT. 57  
 C CO11247  
 G. C. H.  
 21 FEB. 58  
 D CO12789  
 M. B. F.  
 14 MAY 58  
 E CO18841  
 H. B. W.  
 20 JAN. 65  
 F CO20578  
 M. B. F.  
 30 NOV. 65  
 G CO26064  
 M. B. S.  
 25 JUNE 69  
 H CO52194  
 G. J. W.  
 22 SEP. 83  
 J CO55051-B  
 K CO74287  
 G. J. W.  
 22 APR. 93  
 DRAWN  
 R. L. Z. 12 OCT. 56  
 CHECK  
 G. C. H. 24 OCT. 56



### NOTES

- 1 - IT IS ESSENTIAL TO PREVENT ENTRANCE OF HARMFUL AGENTS THRU THE CONDUIT OPENING TO OBTAIN THE FULL BENEFIT OF THE SEALED CONSTRUCTION PROVIDED IN THIS UNIT
- 2 SWITCH IS ASSEMBLED FOR ACTUATION IN EITHER DIRECTION
- 3 - LEVER MAY BE POSITIVELY LOCKED AT INTERVALS OF APPROX 0.4° (870 POSITIONS)
- 4 - LEVER MAY BE ADJUSTED TO ACTUATE THE SWITCH IN THE CLOCKWISE DIRECTION ONLY, THE COUNTER-CLOCKWISE DIRECTION ONLY, OR IN BOTH DIRECTIONS 2 5
- 5 TO CONVERT SWITCH FOR ACTUATION IN EITHER CLOCKWISE OR COUNTER-CLOCKWISE DIRECTION ONLY, REMOVE THE HEAD AND SLIDE THE CAM TOWARD THE REAR OF THE HEAD SUFFICIENTLY TO DISENGAGE FROM THE FLATS ON THE SHAFT. ROTATE THE CAM 90° IN THE OPPOSITE DIRECTION OF THE ACTUATION DESIRED AND RE-ENGAGE THE CAM WITH THE FLATS ON THE SHAFT

CHARACTERISTICS	ELECTRICAL DATA	SCALE 1/2 TO 1
OPERATING FORCE ----- 3 LBS. MAX.	CONTACT ARRANGEMENT	DO NOT SCALE PRINT
FULL OVERTRAVEL FORCE ----- 4 LBS. MAX.	S. P. D. T.	UNLESS OTHERWISE SPECIFIED DIMENSIONS ARE IN INCHES
RELEASE FORCE ----- (B) 1/4 LB. MIN.	20 A-120, 240, 480 OR 600 VAC; 3/4 HP-120 VAC, 1 1/2 H.P.-240 VAC; 1/2 A-115 VDC; 1/4 A-230 VDC PILOT DUTY RATING: 600 VAC MAX.	<b>TOLERANCES ARE:</b>
PRETRAVEL ----- (3) 12° MAX.	(UL)	ONE PLACE (.0) ±.030
DIFFERENTIAL TRAVEL ----- (4) 4° MAX.	(SF)	TWO PLACE (.00) ±.015
OVERTRAVEL ----- (5) 60° MIN.	(D)	THREE PLACE (.000) ±.005
SWITCH-BASIC REPLACEMENT ----- IMKI		ANGLES ±
		WEIGHT