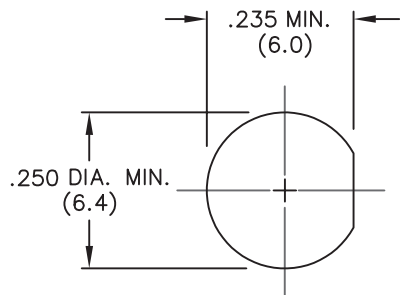
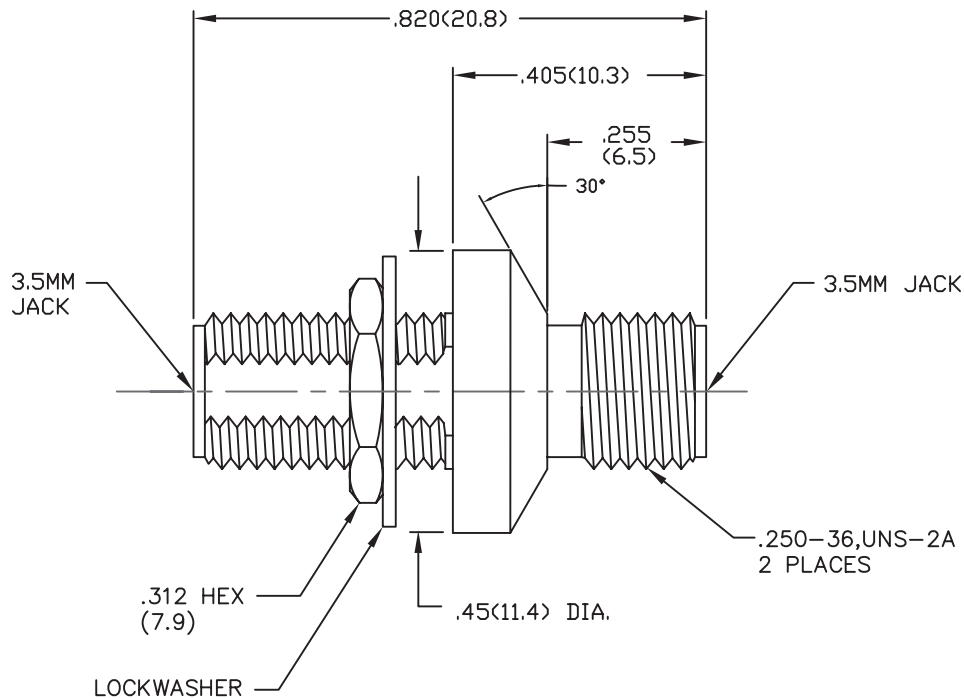


NOTES:

- 1.0 MATERIALS:
 - 1.1 HOUSING, LOCK NUTS AND LOCKWASHER
STAINLESS STEEL PER ASTM-A582, TYPE 303
 - 1.2 CENTER CONTACT: BERYLLIUM COPPER ROD
ALLOY C172, PER ASTM-B196.
 - 1.3 DIELECTRIC: PTFE FLUOROCARBON PER ASTM-D1457.
- 2.0 PLATING:
 - 2.1 HOUSING, LOCK NUT AND LOCKWASHER:
PASSIVATED PER QQ-P-35 AND MIL-F-14072
 - 2.2 CENTER CONTACT: GOLD PER MIL-G-45204,
TYPE II, CLASS 2
- 3.0 MECHANICAL:
 - 3.1 CENTER CONTACT CAPTURED IN ACCORDANCE
WITH MIL-A-55339/31.
- 4.0 TESTING:
 - 4.1 FREQUENCY RANGE: DC to 26.5 GHz
 - 4.2 VSWR: 1.05 + .005f(GHz)
- 5.0 DIMENSIONS IN PARENTHESIS ARE IN MILLIMETERS.

ALL OTHER MECHANICAL, ELECTRICAL, AND ENVIRONMENTAL CHARACTERISTICS ARE IN ACCORDANCE WITH MIL-A-55339/31.




RECOMMENDED MOUNTING HOLE

REV.	DESCRIPTION	DATE
-	RELEASED	6/24/94
-1	FIX TYPO	11/25/94
-2	ADDED TITLEBLOCK	3/17/05

NOTICE: The information contained in this drawing is proprietary and must not be used without the permission of Cinch Connectivity Solutions.

UNLESS OTHERWISE NOTED DIMENSIONS ARE IN INCHES AND TOLERANCES ARE:
 3 PLACE DECIMALS ±.005
 2 PLACE DECIMALS ±.02
 FRACTIONS ±1/64
 PARALLELITY: T.I.R.
 FLATNESS: T.I.R.
 CONCENTRICITY: T.I.R.
 ANGLES AND PERPENDICULARITY: ±1°

CAGE CODE 34078		MIDWEST MICROWAVE	
		TITLE ADAPTER 3.5MM BULKHEAD JACK TO JACK OUTLINE DRAWING	
		DRAWN/DATE A.BEATTY 6/15/94	ENG./DATE A.OSGA 6/21/94
CHECKED/DATE M.HOLLMAN 6/17/94		APPROVED/DATE	
SCALE: 5=1		SHEET 1 of 1	